



Epoxy Coated Modulating Float Operated Valve , Full Bore Water Level Float Valve

Our Product Introduction

for more products please visit us on watercontrol-valve.com

Basic Information

- Place of Origin: China
- Brand Name: OEM
- Certification: EN1074-5
- Model Number: A100
- Minimum Order Quantity: 1
- Price: Negotiable
- Packaging Details: Plywood Cases
- Delivery Time: 15-60 Days
- Payment Terms: L/C, T/T
- Supply Ability: Based On Order



Product Specification

- Material: Ductile Iron GJS500-7
- Pilot Material: SS304
- Standard: EN1074-5
- Function: Modulating
- Coating: EPOXY
- Diaphragm: Nylon Reinforcement With EPDM
- Highlight: float valve for water storage tank



More Images



Product Description

Nylon Reinforcement Diaphragm Stainless Steel Pilot Modulating Float control valve Full Bore EPOXY Coated

Surface Treatment

We offer the following processes to choose:

1. Mechanical Polishing (MP) to improve brightness (gloss, matte)
2. Acid Cleaning for Anti-corrosion
3. Electrolysis Polish (EP) to improve surface smoothness
4. Custom Process: Bright Annealing treatment eliminate stresses to improve toughness

Technical Data:

| | |
|---------------------|--------------------|
| Size | DN50-DN800 |
| Working Temperature | - 10 C- 80 C |
| Flange | AISI B16.1 Or PN16 |
| Flow Media | Clean Water |

Introduction:

A100 is used to maintain a preset water level in a reservoir or a water tank in a simple, economic manner. The A100 valve is activated by the line pressure.

The A100 stays open as long as the water level in the reservoir is below the preset level. As the water level rises and lifts the float, the valve gradually closes.

Service Fields:

For water system, irrigation system.

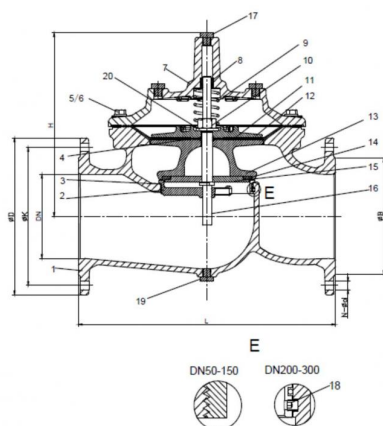
Consult Factory for other applications

IP68 for water resistance

Comply with BS EN 1074-5, ISO 5208, BS EN 12266-1, BS EN 558-1

Materials And Dimension

DN50-DN350



| No. | Description | Material | Standard |
|-----|---------------|-------------------------|--------------------|
| 1 | Body | Ductile Iron | GJS 500-7 |
| 2 | Seat | Stainless Steel | AISI 304/316 |
| 3 | O-ring | Rubber | NBR |
| 4 | O-ring | Rubber | NBR |
| 5 | Bolt | Stainless Steel | A2/A4 |
| 6 | Washer | Stainless Steel | A2/A4 |
| 7 | Bonnet | Ductile Iron | GJS 500-7 |
| 8 | Bush | Bronze | C61900 |
| 9 | Spring | Stainless Steel | AISI 304/316 |
| 10 | Caulking Nut | Stainless Steel | A4 |
| 11 | Diaphragm | Nylon Reinforced Rubber | EPDM +Nylon Fabric |
| 12 | Fixing holder | Ductile Iron | GJS 500-7 |
| 13 | Disc Holder | Ductile Iron | GJS 500-7 |
| 14 | Seal | Rubber | EPDM |
| 15 | Seat Retainer | Stainless Steel | AISI 304/316 |
| 16 | Stem | Stainless Steel | AISI 304/316 |
| 17 | Plug | Stainless Steel | AISI 304/316 |
| 18 | Screw | Stainless Steel | A2/A4 |
| 19 | Plug | Stainless Steel | A2/A4 |
| 20 | Washer | Stainless Steel | A2/A4 |

Dimension:

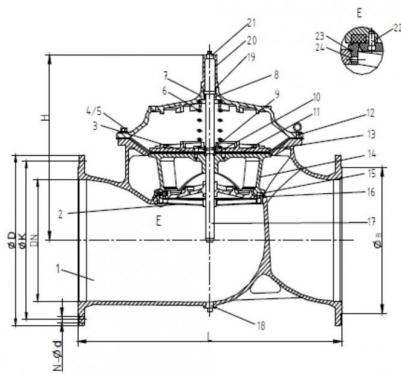
Unit: mm

| DN | Model Code | L | ØD | | | ØK | | | H | N-Ød | | | ØB | | |
|------|------------|-----|------|------|------|------|------|------|-----|--------|--------|--------|------|------|------|
| | | | PN10 | PN16 | PN25 | PN10 | PN16 | PN25 | | PN10 | PN16 | PN25 | PN10 | PN16 | PN25 |
| 50 | A900-0050 | 230 | 165 | 165 | 165 | 125 | 125 | 125 | 177 | 4-Ø19 | 4-Ø19 | 4-Ø19 | Ø99 | Ø99 | Ø99 |
| 65 | A900-0065 | 290 | 185 | 185 | 185 | 145 | 145 | 145 | 202 | 4-Ø19 | 4-Ø19 | 8-Ø19 | Ø118 | Ø118 | Ø118 |
| 80 | A900-0080 | 310 | 200 | 200 | 200 | 160 | 160 | 160 | 219 | 8-Ø19 | 8-Ø19 | 8-Ø19 | Ø132 | Ø132 | Ø132 |
| 100 | A900-0100 | 350 | 220 | 220 | 235 | 180 | 180 | 180 | 243 | 8-Ø19 | 8-Ø19 | 8-Ø23 | Ø156 | Ø156 | Ø156 |
| *125 | A900-0125 | 400 | 250 | 250 | 270 | 210 | 210 | 220 | 243 | 8-Ø19 | 8-Ø19 | 8-Ø28 | Ø156 | Ø156 | Ø156 |
| 150 | A900-0150 | 480 | 285 | 285 | 300 | 240 | 240 | 250 | 333 | 8-Ø23 | 8-Ø23 | 8-Ø28 | Ø211 | Ø211 | Ø211 |
| 200 | A900-0200 | 600 | 340 | 340 | 360 | 295 | 295 | 310 | 428 | 8-Ø23 | 12-Ø23 | 12-Ø28 | Ø266 | Ø266 | Ø274 |
| 250 | A900-0250 | 730 | 405 | 405 | 425 | 350 | 355 | 370 | 478 | 12-Ø23 | 12-Ø28 | 12-Ø31 | Ø319 | Ø319 | Ø330 |
| 300 | A900-0300 | 850 | 460 | 460 | 485 | 400 | 410 | 430 | 538 | 12-Ø23 | 12-Ø28 | 16-Ø31 | Ø370 | Ø370 | Ø389 |
| *350 | A900-0350 | 980 | 520 | 520 | 555 | 460 | 470 | 490 | 550 | 16-Ø23 | 16-Ø28 | 16-Ø34 | Ø429 | Ø429 | Ø448 |

NOTE: 1. *DN125/350 use same internal as DN100/300

2. AISI 304 factory standard material. consult factory for AISI 316 material.

DN400-DN800



| No. | Description | Material | Standard |
|-----|---------------|-------------------------|--------------------|
| 1 | Body | Ductile Iron | GJS 500-7 |
| 2 | Seat | Stainless Steel | AISI 304/316 |
| 3 | Screw | Stainless Steel | A2/A4 |
| 4 | Screw | Stainless Steel | A2/A4 |
| 5 | Screw | Stainless Steel | A2/A4 |
| 6 | Spring | Stainless Steel | AISI 304/316 |
| 7 | Bonnet | Ductile Iron | GJS 500-7 |
| 8 | Bush | Bronze | C61900 |
| 9 | O-ring | Rubber | NBR |
| 10 | Fix Washer | Bronze | C61900 |
| 11 | Diaphragm | Nylon Reinforced Rubber | EPDM +Nylon Fabric |
| 12 | Eye Bolts | Carbon Steel | 1040 |
| 13 | Fixing Holder | Ductile Iron | GJS 500-7 |
| 14 | Disc Holder | Ductile Iron | GJS 500-7 |
| 15 | Seal | Rubber | EPDM |
| 16 | Seal Retainer | Ductile Iron | GJS 500-7 |
| 17 | Stem | Stainless Steel | AISI 304/316 |
| 18 | Plug | Stainless Steel | AISI 304/316 |
| 19 | O-ring | Rubber | NBR |
| 20 | Cap | Ductile Iron | GJS 500-7 |
| 21 | Plug | Stainless Steel | AISI 304/316 |
| 22 | Screw | Stainless Steel | A2/A4 |
| 23 | O-ring | Rubber | NBR |
| 24 | Screw | Stainless Steel | A2/A4 |

Dimension:

Unit: mm

| DN | Model Code | L | H | ØD | | | ØK | | | N-Ød | | | ØB | | |
|------|------------|------|------|------|------|------|------|------|------|--------|--------|--------|------|------|------|
| | | | | PN10 | PN16 | PN25 | PN10 | PN16 | PN25 | PN10 | PN16 | PN25 | PN10 | PN16 | PN25 |
| 400 | A900-0400 | 1100 | 710 | 580 | 580 | 620 | 515 | 525 | 550 | 16-Ø28 | 16-Ø31 | 16-Ø37 | 480 | 480 | 503 |
| *450 | A900-0450 | 1200 | 720 | 640 | 640 | 670 | 565 | 585 | 600 | 20-Ø28 | 20-Ø31 | 20-Ø37 | 530 | 548 | 548 |
| 500 | A900-0500 | 1250 | 822 | 715 | 715 | 730 | 620 | 650 | 660 | 20-Ø28 | 20-Ø34 | 20-Ø37 | 582 | 609 | 609 |
| 600 | A900-0600 | 1450 | 885 | 840 | 840 | 845 | 725 | 770 | 770 | 20-Ø31 | 20-Ø37 | 20-Ø40 | 682 | 720 | 720 |
| *700 | A900-0700 | 1650 | 910 | 910 | 910 | 960 | 840 | 840 | 875 | 24-Ø31 | 24-Ø37 | 24-Ø43 | 682 | 720 | 720 |
| 800 | A900-0800 | 1850 | 1260 | 1025 | 1025 | 1085 | 950 | 950 | 990 | 24-Ø34 | 24-Ø40 | 24-Ø49 | 901 | 901 | 928 |

Note: 1. *DN450/700 use same internal as DN400/600.

2. AISI 304 factory standard material. consult factory for AISI 316 material.



Beijing Silk Road Enterprise Management Services Co.,LTD



17733330123



miclecleanmo@gmail.com



watercontrol-valve.com

18-2 JinFu East Rd. Ulks Village. Futian New district. Shenzhen. China.