



## DN50 - DN800 Water Pressure Reducing Valve With Ductile Iron Body

### Our Product Introduction

for more products please visit us on [watercontrol-valve.com](http://watercontrol-valve.com)

#### Basic Information

- Place of Origin: China
- Brand Name: OEM
- Certification: EN1074-5
- Model Number: A200
- Minimum Order Quantity: 1
- Price: Negotiable
- Packaging Details: Plywood Cases
- Delivery Time: 15-60 Days
- Payment Terms: L/C, T/T
- Supply Ability: Based On Order



#### Product Specification

- Material: Ductile Iron GJS500-7
- Pilot Material: SS304
- Tubing: SS304
- Coating: EPOXY
- Diaphragm: Nylon Reinforcement With EPDM
- Rubber: EPDM
- Highlight: **water pressure control valve**



#### More Images



## Product Description

### Stable Down Stream Pressure SS304 Pilot Ductile Iron Main Valve EPOXY Coated A200 Water Pressure Reducing Valve

#### Feature:

- Constant downstream pressure in water supply
- Low head loss in fully open position.
- Safe operation, no energy supply needed
- Robust and reliable

#### How do we ensure finished product quality (FQC inspection)

1. Visual Inspection
2. Material Grade Measurement
3. Dimension Inspection
4. Roughness Detection
5. Roughness Detection
6. Leakage Test

#### Description:

A200 maintains a preset downstream pressure, regardless of upstream pressure or flow rate fluctuation. The main valve is controlled by a 2-way pilot valve (creating a minimal differential in open position) to control the water in upper chamber to regulate the outlet pressure.

#### Service Fields:

For water system, irrigation system.

#### Technical Data:

Size	DN50-DN800
Working Temperature	- 10 C- 80 C
Flange	AISI B16.1 Or PN16
Flow Media	Clean Water

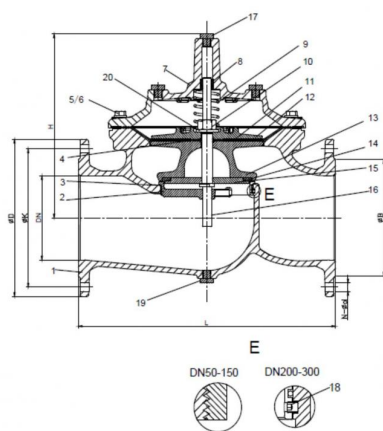
Consult Factory for other applications

IP68 for water resistance

Comply with BS EN 1074-5, ISO 5208, BS EN 12266-1, BS EN 558-1

#### Materials And Dimension

DN50-DN350



No.	Description	Material	Standard
1	Body	Ductile Iron	GJS 500-7
2	Seat	Stainless Steel	AISI 304/316
3	O-ring	Rubber	NBR
4	O-ring	Rubber	NBR
5	Bolt	Stainless Steel	A2/A4
6	Washer	Stainless Steel	A2/A4
7	Bonnet	Ductile Iron	GJS 500-7
8	Bush	Bronze	C61900
9	Spring	Stainless Steel	AISI 304/316
10	Caulking Nut	Stainless Steel	A4
11	Diaphragm	Nylon Reinforced Rubber	EPDM +Nylon Fabric
12	Fixing holder	Ductile Iron	GJS 500-7
13	Disc Holder	Ductile Iron	GJS 500-7
14	Seal	Rubber	EPDM
15	Seat Retainer	Stainless Steel	AISI 304/316
16	Stem	Stainless Steel	AISI 304/316
17	Plug	Stainless Steel	AISI 304/316
18	Screw	Stainless Steel	A2/A4
19	Plug	Stainless Steel	A2/A4
20	Washer	Stainless Steel	A2/A4

# Dimension:

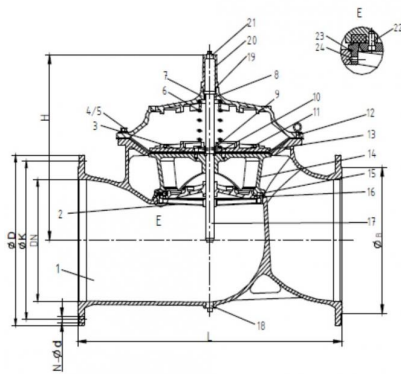
Unit: mm

DN	Model Code	L	ØD			ØK			H	N-Ød			ØB		
			PN10	PN16	PN25	PN10	PN16	PN25		PN10	PN16	PN25	PN10	PN16	PN25
50	A900-0050	230	165	165	165	125	125	125	177	4-Ø19	4-Ø19	4-Ø19	Ø99	Ø99	Ø99
65	A900-0065	290	185	185	185	145	145	145	202	4-Ø19	4-Ø19	8-Ø19	Ø118	Ø118	Ø118
80	A900-0080	310	200	200	200	160	160	160	219	8-Ø19	8-Ø19	8-Ø19	Ø132	Ø132	Ø132
100	A900-0100	350	220	220	235	180	180	180	243	8-Ø19	8-Ø19	8-Ø23	Ø156	Ø156	Ø156
*125	A900-0125	400	250	250	270	210	210	220	243	8-Ø19	8-Ø19	8-Ø28	Ø156	Ø156	Ø156
150	A900-0150	480	285	285	300	240	240	250	333	8-Ø23	8-Ø23	8-Ø28	Ø211	Ø211	Ø211
200	A900-0200	600	340	340	360	295	295	310	428	8-Ø23	12-Ø23	12-Ø28	Ø266	Ø266	Ø274
250	A900-0250	730	405	405	425	350	355	370	478	12-Ø23	12-Ø28	12-Ø31	Ø319	Ø319	Ø330
300	A900-0300	850	460	460	485	400	410	430	538	12-Ø23	12-Ø28	16-Ø31	Ø370	Ø370	Ø389
*350	A900-0350	980	520	520	555	460	470	490	550	16-Ø23	16-Ø28	16-Ø34	Ø429	Ø429	Ø448

NOTE: 1. \*DN125/350 use same internal as DN100/300

2. AISI 304 factory standard material. consult factory for AISI 316 material.

## DN400-DN800



No.	Description	Material	Standard
1	Body	Ductile Iron	GJS 500-7
2	Seat	Stainless Steel	AISI 304/316
3	Screw	Stainless Steel	A2/A4
4	Screw	Stainless Steel	A2/A4
5	Screw	Stainless Steel	A2/A4
6	Spring	Stainless Steel	AISI 304/316
7	Bonnet	Ductile Iron	GJS 500-7
8	Bush	Bronze	C61900
9	O-ring	Rubber	NBR
10	Fix Washer	Bronze	C61900
11	Diaphragm	Nylon Reinforced Rubber	EPDM +Nylon Fabric
12	Eye Bolts	Carbon Steel	1040
13	Fixing Holder	Ductile Iron	GJS 500-7
14	Disc Holder	Ductile Iron	GJS 500-7
15	Seal	Rubber	EPDM
16	Seal Retainer	Ductile Iron	GJS 500-7
17	Stem	Stainless Steel	AISI 304/316
18	Plug	Stainless Steel	AISI 304/316
19	O-ring	Rubber	NBR
20	Cap	Ductile Iron	GJS 500-7
21	Plug	Stainless Steel	AISI 304/316
22	Screw	Stainless Steel	A2/A4
23	O-ring	Rubber	NBR
24	Screw	Stainless Steel	A2/A4

# Dimension:

Unit: mm

DN	Model Code	L	H	ØD			ØK			N-Ød			ØB		
				PN10	PN16	PN25	PN10	PN16	PN25	PN10	PN16	PN25	PN10	PN16	PN25
400	A900-0400	1100	710	580	580	620	515	525	550	16-Ø28	16-Ø31	16-Ø37	480	480	503
*450	A900-0450	1200	720	640	640	670	565	585	600	20-Ø28	20-Ø31	20-Ø37	530	548	548
500	A900-0500	1250	822	715	715	730	620	650	660	20-Ø28	20-Ø34	20-Ø37	582	609	609
600	A900-0600	1450	885	840	840	845	725	770	770	20-Ø31	20-Ø37	20-Ø40	682	720	720
*700	A900-0700	1650	910	910	910	960	840	840	875	24-Ø31	24-Ø37	24-Ø43	682	720	720
800	A900-0800	1850	1260	1025	1025	1085	950	950	990	24-Ø34	24-Ø40	24-Ø49	901	901	928

Note: 1. \*DN450/700 use same internal as DN400/600.

2. AISI 304 factory standard material. consult factory for AISI 316 material.



**Beijing Silk Road Enterprise Management Services Co.,LTD**



17733330123



miclecleanmo@gmail.com



watercontrol-valve.com

18-2 JinFu East Rd. Ulks Village. Futian New district. Shenzhen. China.