



Epoxy Coated Water Pressure Reducing Valve For Agricultural Irrigation System

Our Product Introduction

for more products please visit us on watercontrol-valve.com

Basic Information

- Place of Origin: China
- Brand Name: OEM
- Certification: EN1074-5
- Model Number: A200
- Minimum Order Quantity: 1
- Price: Negotiable
- Packaging Details: Plywood Cases
- Delivery Time: 15-60 Days
- Payment Terms: L/C, T/T
- Supply Ability: Based On Order



Product Specification

- Material: Ductile Iron GJS500-7
- Pilot Material: SS304
- Tubing: SS304
- Coating: EPOXY
- Diaphragm: Nylon Reinforcement With EPDM
- Rubber: EPDM
- Highlight: adjustable pressure reducing valve



More Images



Product Description

A200 Pressure reducing valve Anti cavitation design Ductile Iron Main Valve SS304 Pilot

Forming Machine Process

1. CNC Lathe Processing
2. High precision CNC machining center processing
3. General lathe processing
4. The machine punch the product parts
5. Cold Forming Molding
6. Welding Assembly

Technical Data:

Size	DN50-DN800
Working Temperature	- 10 C- 80 C
Flange	AISI B16.1 Or PN16
Flow Media	Clean Water

A200 is a pressure reducing valve which consists of

1. Main valve
2. Reducing pilot-P200
3. Reduce a higher inlet pressure to a stable outlet pressure
4. Regardless of variation of inlet pressure or variation of outlet flow.
6. When downstream pressure exceeds setting, pilot and main valve will close
7. V-port as an accessory. Reduced bore as an option.

Service Fields:

For water system, irrigation system.

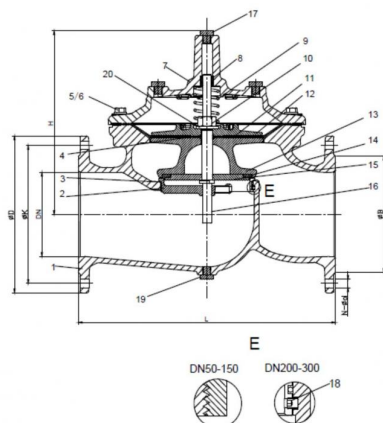
Consult Factory for other applications

IP68 for water resistance

Comply with BS EN 1074-5, ISO 5208, BS EN 12266-1, BS EN 558-1

Materials And Dimension

DN50-DN350



Parts List			
No.	Description	Material	Standard
1	Body	Ductile Iron	GJS500-7
2	Seat	Stainless Steel	AISI304/316
3	O-ring	Rubber	NBR
4	O-ring	Rubber	NBR
5	Bolt	Stainless Steel	A2/A4
6	Washer	Stainless Steel	A2/A4
7	Bonnet	Ductile Iron	GJS500-7
8	Bush	Bronze	C61900
9	Spring	Stainless Steel	AISI304/316
10	Caulking Nut	Stainless Steel	A4
11	Diaphragm	Nylon Reinforced Rubber	EPDM+Nylon Fabric
12	Fixing Holder	Ductile Iron	GJS500-7
13	Disc Holder	Ductile Iron	GJS500-7
14	Seal	Rubber	EPDM
15	Seat Retainer	Stainless Steel	AISI304/316

16	Stem	Stainless Steel	AISI304/316
17	Plug	Stainless Steel	AISI304/316
18	Screw	Stainless Steel	A2/A4
19	Plug	Stainless Steel	A2/A4
20	Washer	Stainless Steel	A2/A4

Dimension:

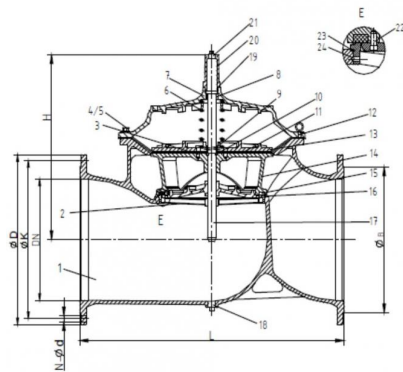
Unit: mm

DN	Model Code	L	ØD			ØK			H	N-Ød			ØB		
			PN10	PN16	PN25	PN10	PN16	PN25		PN10	PN16	PN25	PN10	PN16	PN25
50	A900-0050	230	165	165	165	125	125	125	177	4-Ø19	4-Ø19	4-Ø19	Ø99	Ø99	Ø99
65	A900-0065	290	185	185	185	145	145	145	202	4-Ø19	4-Ø19	8-Ø19	Ø118	Ø118	Ø118
80	A900-0080	310	200	200	200	160	160	160	219	8-Ø19	8-Ø19	8-Ø19	Ø132	Ø132	Ø132
100	A900-0100	350	220	220	235	180	180	190	243	8-Ø19	8-Ø19	8-Ø23	Ø156	Ø156	Ø156
*125	A900-0125	400	250	250	270	210	210	220	243	8-Ø19	8-Ø19	8-Ø28	Ø156	Ø156	Ø156
150	A900-0150	480	285	285	300	240	240	250	333	8-Ø23	8-Ø23	8-Ø28	Ø211	Ø211	Ø211
200	A900-0200	600	340	340	360	295	295	310	428	8-Ø23	12-Ø23	12-Ø28	Ø266	Ø266	Ø274
250	A900-0250	730	405	405	425	350	355	370	478	12-Ø23	12-Ø28	12-Ø31	Ø319	Ø319	Ø330
300	A900-0300	850	460	460	485	400	410	430	538	12-Ø23	12-Ø28	16-Ø31	Ø370	Ø370	Ø389
*350	A900-0350	980	520	520	555	460	470	490	550	16-Ø23	16-Ø28	16-Ø34	Ø429	Ø429	Ø448

NOTE: 1. *DN125/350 use same internal as DN100/300

2. AISI 304 factory standard material. consult factory for AISI 316 material.

DN400-DN800



Parts List

No.	Description	Material	Standard
1	Body	Ductile Iron	GJS500-7
2	Seat	Stainless Steel	AISI304/316
3	Screw	Stainless Steel	A2/A4
4	Screw	Stainless Steel	A2/A4
5	Screw	Stainless Steel	A2/A4
6	Spring	Stainless Steel	AISI304/316
7	Bonnet	Ductile Iron	GJS500-7
8	Bush	Bronze	C61900
9	O-ring	Rubber	NBR
10	Fix Washer	Bronze	C61900
11	Diaphragm	Nylon Reinforced Rubber	EPDM+Nylon Fabric
12	Eye Bolts	Carbon Steel	1040
13	Fixing Holder	Ductile Iron	GJS500-7
14	Disc Holder	Ductile Iron	GJS500-7
15	Seal	Rubber	EPDM
16	Seat Retainer	Ductile Iron	GJS500-7
17	Stem	Stainless Steel	AISI304/316
18	Plug	Stainless Steel	AISI304/316
19	O-ring	Rubber	NBR
20	Cap	Ductile Iron	GJS500-7
21	Plug	Stainless Steel	AISI304/316
22	Screw	Stainless Steel	A2/A4
23	O-ring	Rubber	NBR
24	Screw	Stainless Steel	A2/A4

Dimension:

Unit: mm

DN	Model Code	L	H	ØD			ØK			N-Ød			ØB		
				PN10	PN16	PN25	PN10	PN16	PN25	PN10	PN16	PN25	PN10	PN16	PN25
400	A900-0400	1100	710	580	580	620	515	525	550	16-Ø28	16-Ø31	16-Ø37	480	480	503
*450	A900-0450	1200	720	640	640	670	565	585	600	20-Ø28	20-Ø31	20-Ø37	530	548	548
500	A900-0500	1250	822	715	715	730	620	650	660	20-Ø28	20-Ø34	20-Ø37	582	609	609
600	A900-0600	1450	885	840	840	845	725	770	770	20-Ø31	20-Ø37	20-Ø40	682	720	720
*700	A900-0700	1650	910	910	910	960	840	840	875	24-Ø31	24-Ø37	24-Ø43	682	720	720
800	A900-0800	1850	1260	1025	1025	1085	950	950	990	24-Ø34	24-Ø40	24-Ø49	901	901	928

Note: 1. *DN450/700 use same internal as DN400/600.
2. AISI 304 factory standard material. consult factory for AISI 316 material.



Beijing Silk Road Enterprise Management Services Co.,LTD



17733330123



miclecleanmo@gmail.com



watercontrol-valve.com

18-2 JinFu East Rd. Ulks Village. Futian New district. Shenzhen. China.